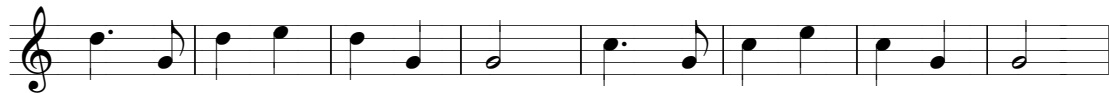


# Alphornklang von der Alp

4 stimmig Arr. Alphornweise

1. Alphorn

Musik: Emma Kaminsky



D.C. ( alles nocheinmal ) beim 2.x rit. bei Schluss.

# Alphornklang von der Alp

4 stimmig Arr. Alphornweise

Musik: Emma Kaminsky

2.Alphorn



© 2008 by Alpenspektalel A-6363 Westendorf.

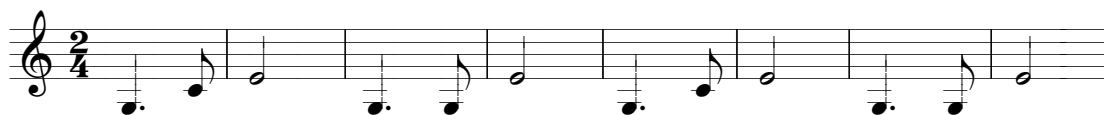
D.C. ( alles nocheinmal ) beim 2.x rit. bei Schluss.

# Alphornklang von der Alp

4 stimmig Arr. Alphornweise

3. Alphorn

Musik: Emma Kaminsky



© 2008 by Alpenspektalel A-6363 Westendorf.

D.C. ( alles nocheinmal ) beim 2.x rit. bei Schluss.

# Alphornklang von der Alp

4 stimmig Arr. Alphornweise

Musik: Emma Kaminsky

4. Alphorn / Bass

The musical score for the 4. Alphorn / Bass part is written in 2/4 time. It consists of three staves of music. The first staff begins with a treble clef and a 2/4 time signature. The notes are: C4 (quarter), G3 (quarter), A3 (quarter), B3 (quarter), C4 (quarter), G3 (quarter), F3 (quarter), E3 (quarter), D3 (quarter), C3 (quarter), B2 (quarter), A2 (quarter), G2 (quarter), F2 (quarter), E2 (quarter), D2 (quarter), C2 (quarter). Chord markings C, G7, C, and G7 are placed below the first, third, fifth, and seventh measures respectively. The second staff continues with notes: G2 (quarter), F2 (quarter), E2 (quarter), D2 (quarter), C2 (quarter), B1 (quarter), A1 (quarter), G1 (quarter), F1 (quarter), E1 (quarter), D1 (quarter), C1 (quarter), B1 (quarter), A1 (quarter), G1 (quarter), F1 (quarter), E1 (quarter), D1 (quarter), C1 (quarter). Chord markings G7 and C are placed below the first and fifth measures. The third staff begins with a treble clef and a 2/4 time signature. The notes are: G2 (quarter), F2 (quarter), E2 (quarter), D2 (quarter), C2 (quarter), B1 (quarter), A1 (quarter), G1 (quarter), F1 (quarter), E1 (quarter), D1 (quarter), C1 (quarter), B1 (quarter), A1 (quarter), G1 (quarter), F1 (quarter), E1 (quarter), D1 (quarter), C1 (quarter). Chord markings G7 and C are placed below the first and fifth measures. A *rit.* instruction is placed above the staff between the second and third measures. The piece ends with a double bar line.

© 2008 by Alpenspektalel A-6363 Westendorf.

D.C. ( alles nocheinmal ) beim 2.x rit. bei Schluss.

# Alphornklang von der Alp

4 stimmig Arr. Alphornweise

Musik: Emma Kaminsky

1. Alphorn

2. Alphorn

3. Alphorn

4. Alphorn

C G7 C G7 C

G7 C

*rit.....*

G7 C